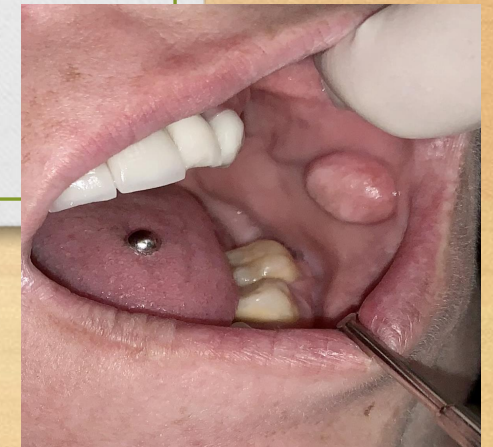




# Clinical Oral Pathology: A Practical Perspective

AAPDP Seminar  
12<sup>th</sup> May 2021



*Dr Ying Guo*  
*DCD (Oral Path)*

# PREFACE

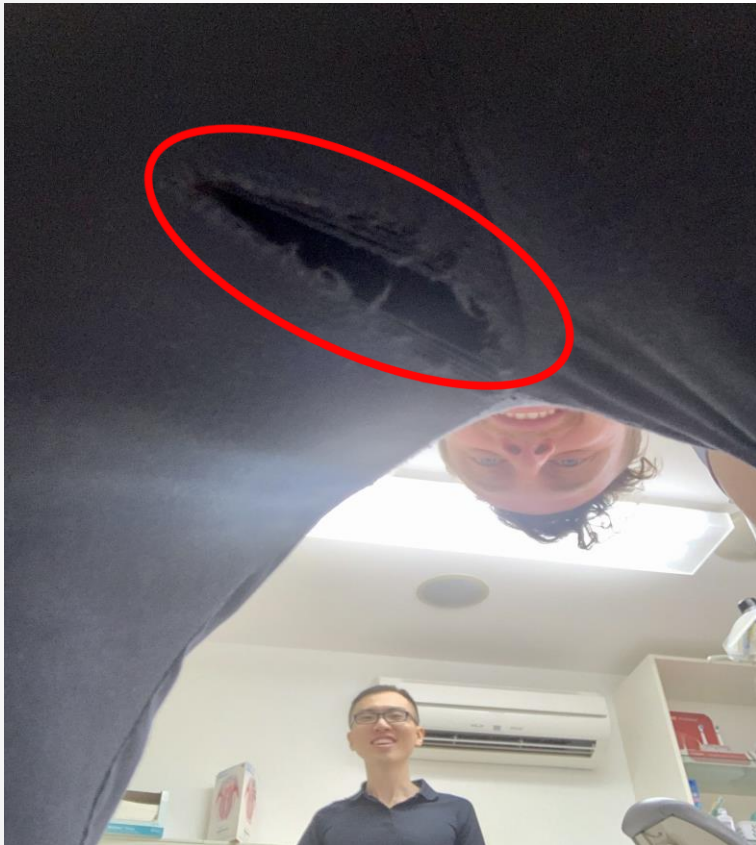
- ❖ **Contents of this presentation are in no way intended to replace your formal curricular learning in Oral Pathology a Adelaide Dental School**
- ❖ **Primary aim of this seminar is to help to put your learning in oral path into a clinical, practical context**

# INTRODUCTION



North Adelaide  
**DentalCare**

# INTRODUCTION



## Mental Dental

Yes, simultaneous bilateral IANBs are possible

# YING'S 5Ss + 5Cs

## WHEN ASSESSING AN ORAL PATH LESION CLINICALLY, CONSIDER...

5Ss	5Cs
Site	Colour
Size	Contour
Shape	Consistency
Surface	Circumscription (Margins)
Symptoms	Chronology (Duration)

# CASE 1: 37YOF



## CASE 2: 61YOF



# CASE 3: 64YOM





# CASE 4: 23YOM



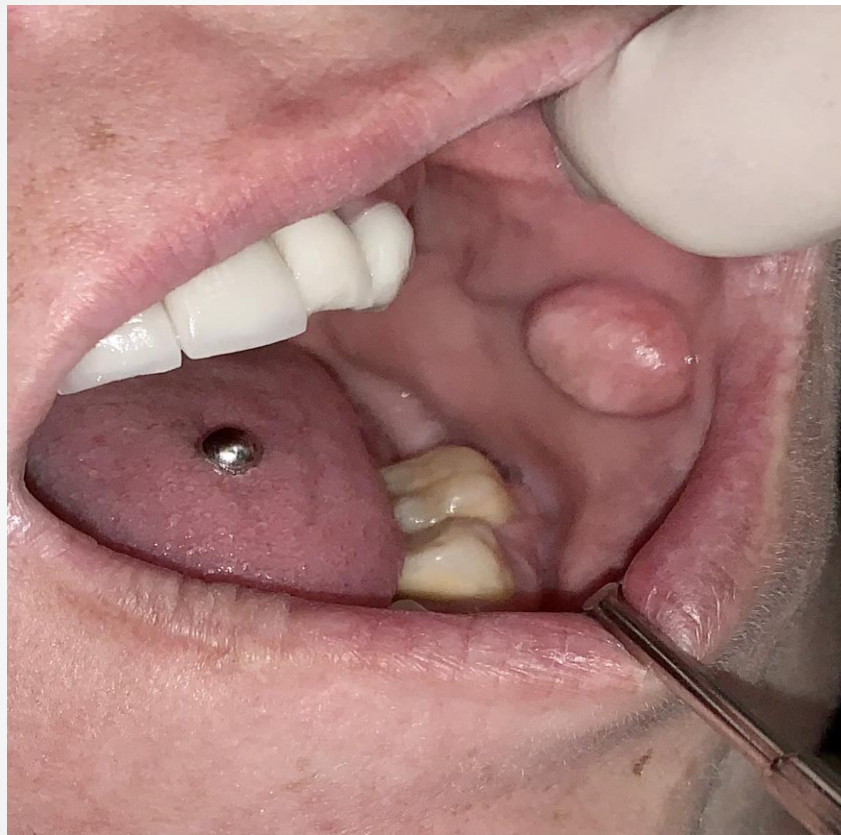
# CASE 5: 35YOF



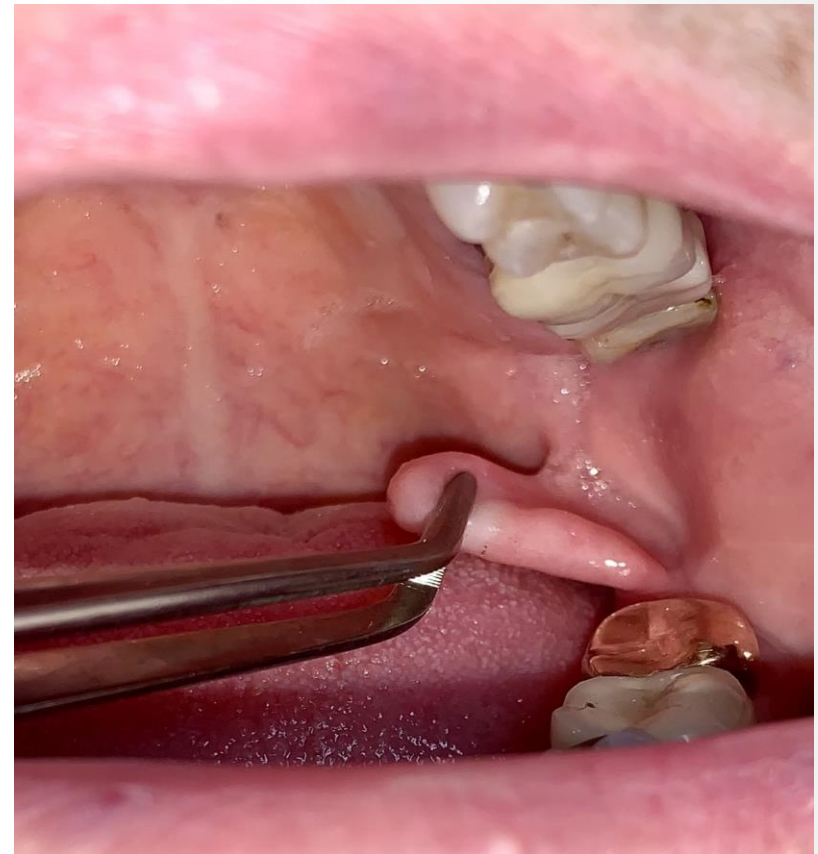
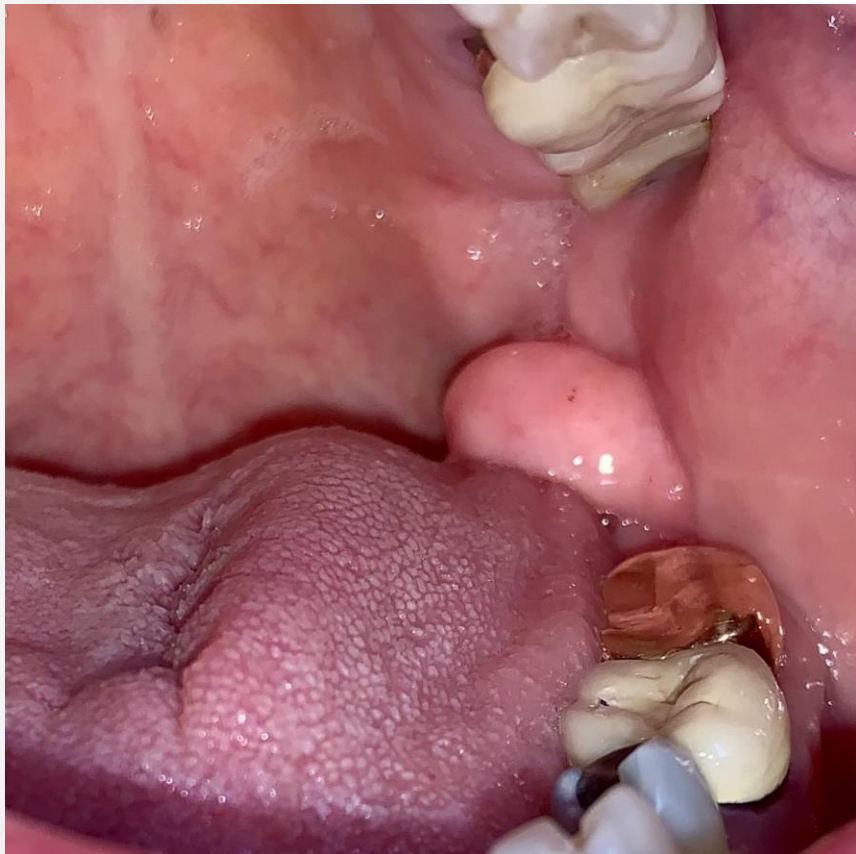
# CASE 6: 64YOF



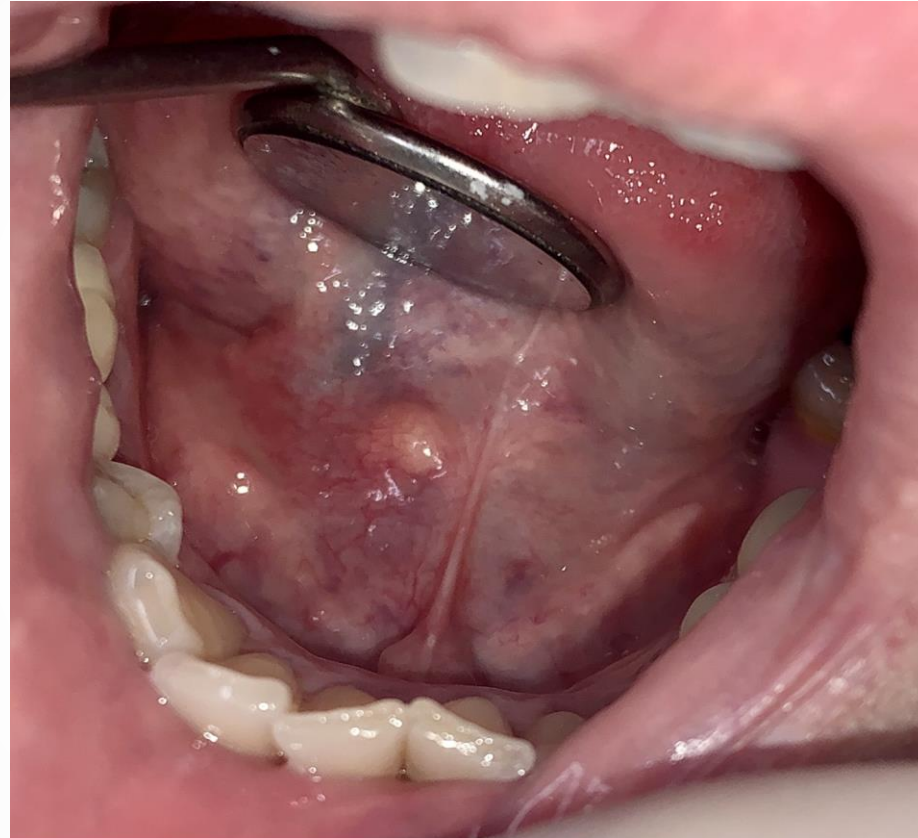
# CASE 7: 33YOF



# CASE 8: 65YOF



# CASE 9: 42YOM



# CASE 10: 25YOM



# CASE 10: 25YOM





# INTERMISSION



Liked by reecelighting91 and others

kfcaustralia Listen up donutters! Hot, cinnamony Kentucky Fried Donuts are here! Sweet as! Not everywhere and not forever (soz TAS and WA).

# CASE 11: 77YOM



# CASE 12: 68YOF



# CASE 13: 39YOM



# CASE 14: 45YOM



# CASE 15: 61YOF



# CASE 16: 37YOM

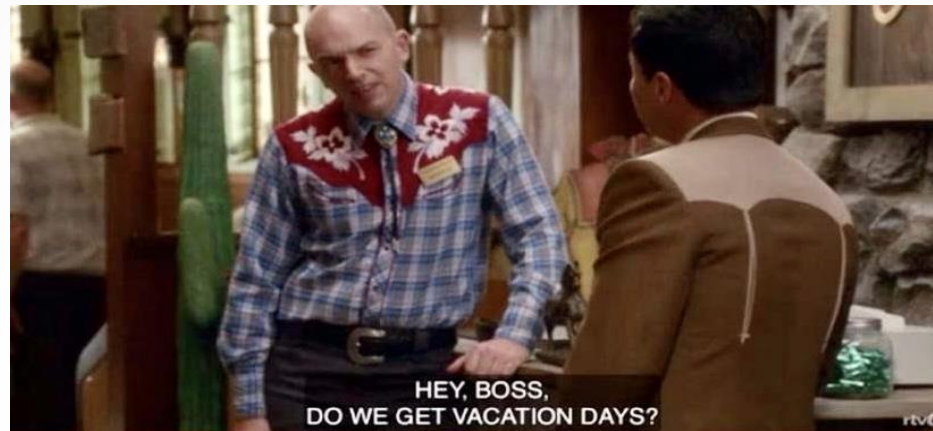


# CASE 17: 59YOM





# IN CONCLUSION...



THANK YOU 😊



# ACKNOWLEDGEMENTS

❖ **North Adelaide Dental Care**

❖ **Mr Chris Wheate**

❖ **All colleagues who have entrusted me with the care of their patients with respect to oral pathology**